



ML HVS-01

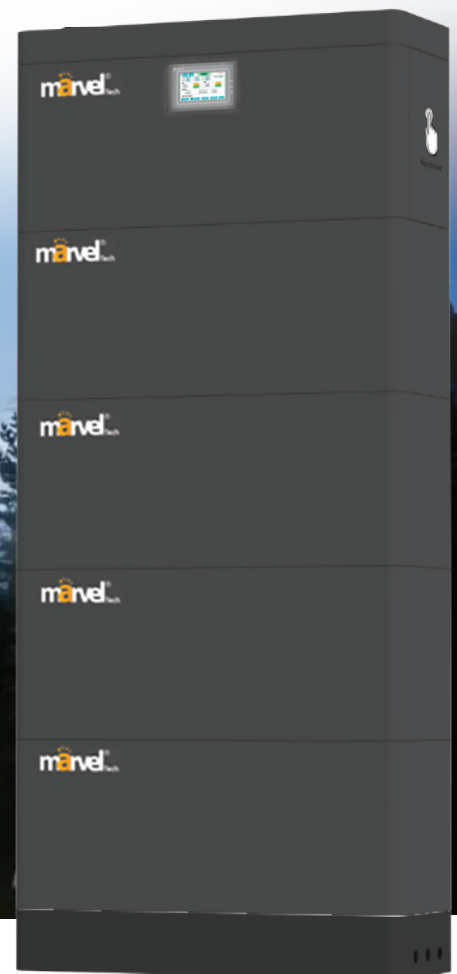
High Voltage LiFePo4 Battery

51.2V 100Ah 5.12kWh

Power up your energy storage game with compact size, lightweight design, and effortless installation of standardized modules, leveraging the advantages of high voltage. Effortlessly customize battery combinations to meet your energy storage needs.

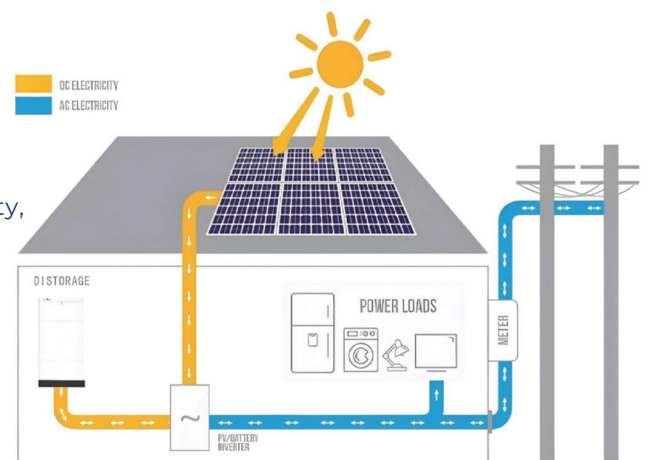
The ML HVS-01 is a high voltage battery system designed by marvel tech with a flexible modular design. It is capable of stacking 3 to 6 battery modules with available capacities from 15.36kWh to 30.72 kWh and voltages from 153.6V to 307.2V.

It is the ideal energy storage solution for on-grid or off-grid solar installations. With the High-Voltage residential battery bank, you can use more clean energy in a more efficient way.

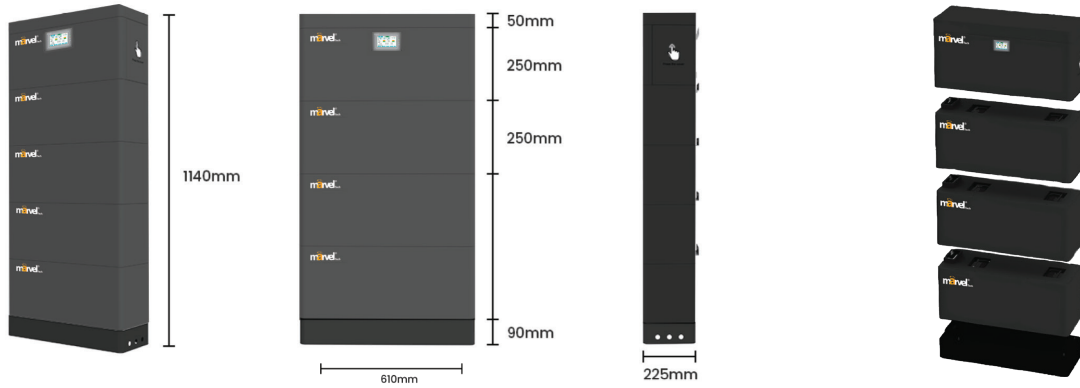


FEATURES:

- ▶ High-voltage LiFePO₄ battery solution, Single module is 51.2V/100Ah/5.12kWh.
- ▶ 3 to 6 layers recommended.
- ▶ Cobalt Free Lithium Iron Phosphate (LFP) Battery: Maximum Safety, Life Cycle and Power.
- ▶ Applicable on grid or hybrid on and off-Grid solar energy storage system.
- ▶ Self-Consumption Optimization for Residential and Commercial Applications.
- ▶ Modular Design Simplifies Transport and Installation.






Dimensions:



Technical Specification

ML HVS-01

Model	153.6V100Ah	204.8V100Ah	256V100Ah	307.2V100Ah
Number of layers	3 layers	4 layers	5 layers	6 layers
Picture				
Energy	15.36KWh	20.48KWh	25.6KWh	30.72KWh
Operating Voltage Range	134.4V~168.48V	179.2V~224.64V	224V~280.8V	268.8V~350.4V
Dimension (L*W*H)mm	610*225*1140	610*225*1390	610*225*1640	610*225*1890
Weight(KG)	170	223	276	329
Recommend charge current	50A			
Max continue charge current@10sec	100A			
Max continue discharge current@10sec	100A			
Display	The information of Battery, such as SOC, battery voltage and so on			
Communication	Support RS485 / CAN			
Maximum parallel support	4 clusters(3 to 6 units per cluster)			
Charging temperature	0°C~55°C			
Discharge temperature	-20°C~60°C			
Environment	Indoor			
Relative humidity	5%~95%			
Cooling	Natural convection			
Cell technology	Lithium-iron phosphate (LiFePO4)			
Protection Rating	IP65			
Life cycle	6000 times @80%DOD			
Certificates	CB, IEC62619, CE-EMC, CE-GPDS, UKCA, UL1973, UL9540A, EN62040, IEC62040; UN38.3, MSDS			

Single module Technical Specification

Module	51.2V 100Ah, 5.12kWh
Dimension (L*W*H)mm	High Voltage Box:610*225*250 Battery Box:610*225*250
Weight(KG)	High Voltage Box:16 Battery Box:48.5